

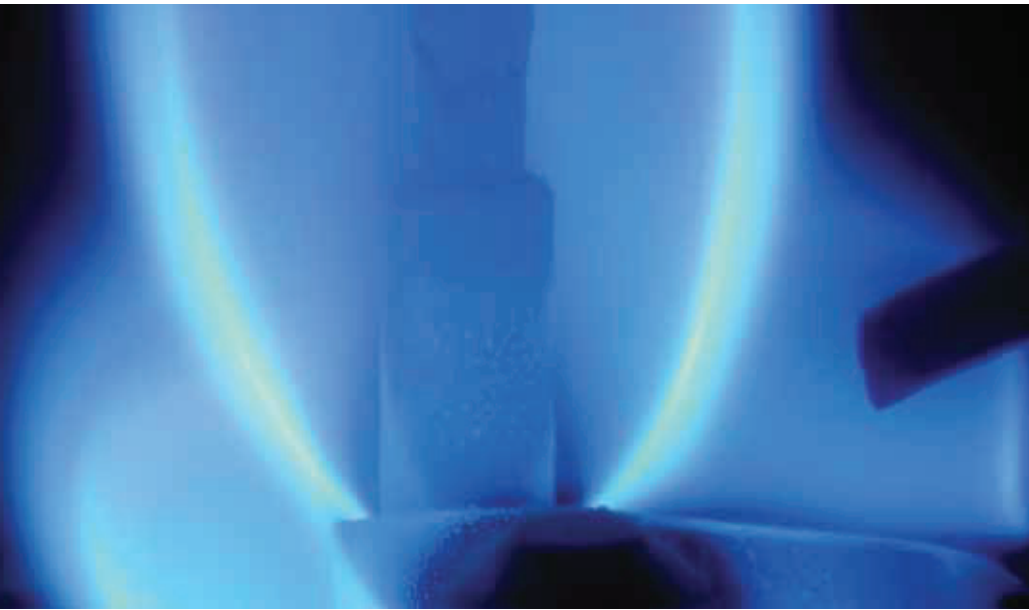
SCC Inc.



www.scccombustion.com

LMV3... Linkagless Burner Management System

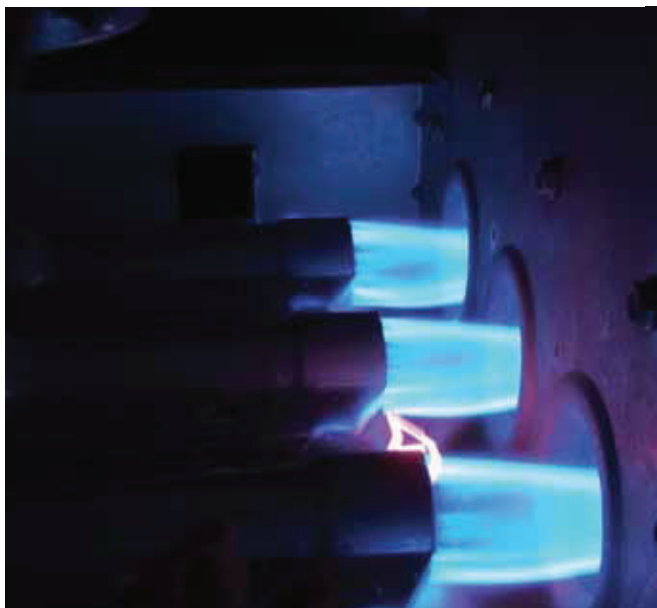
Combustion Controls



The Siemens LMV3... Linkageless Burner Management System sets a new standard for cost effective single or dual fuel burner controls. Ease of installation, programming and commissioning are incorporated into a reliable and field proven control. The LMV3... offers the burner market the opportunity for improved burner performance and efficiency while ensuring safe, reliable operation and accurate control.

Key Features and Benefits

- Single and dual fuel versions
- Effortless commissioning, simple programming, and easy installation allows for maximum ROI
- Password protected access to OEM and service level parameters
- Programming via a keypad or PC
- Independent actuator positions for home, pre-purge, ignition, and post-purge
- Programmable stops to pause the startup sequence in the following phases: pre-purge, pre-ignition, pilot ignition, and main flame
- Adjustable purge timing up to 60 minutes
- Adjustable time overlap of spark ignition transformer and pilot valve
- Programmable overlap of the pilot and the main gas valves
- Proof of Closure switch monitoring
- Gas valve leak test on startup, shutdown, both or neither
- LMV3... will accept a 4-20mA firing rate control signal from any PID controller, including the Siemens RWF40 or RWF10
- Actuator shaft position verification by optical encoder



Fuel Air Ratio Control

The Siemens LMV3... is capable of positioning up to two actuators and one Variable Speed Drive (VSD) simultaneously on programmed curves with an accuracy of 0.2 degree (actuators) and 0.1% (VSD). Standard programs offer many fuel train options, including staged oil and PWM control.



- Separate, programmable actuator positions for ignition and low-fire
- Nine programmable points per curve, per fuel

Capability to use a maximum of two fuel actuators with independent combustion curves.

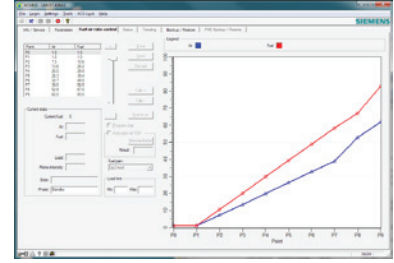
Reliable Flame Monitoring

- Optional UV or Flame Rod supervision
- No exchange of amplifiers or controls necessary
- Simple configuration selects appropriate flame detector



ACS410 PC Commissioning Tool

- Windows-based
- Optional commissioning tool
- Ability to configure, back-up and restore information to a PC
- View real time data
- Trend, log and print data



Communication and Annunciation

- RS485 Modbus RTU Communications
- Access to more than 40 read/write registers enables precise burner supervision and control
- Registers include:
 - Fault History
 - Lockout History
 - Flame Signal Intensity
 - Remote firing rate control
 - Fuel Flow (via flow meters connected to LMV3...)



SCC, Inc.
1250 Lunt Avenue
Elk Grove Village, IL 60007
USA
Telephone: 1-224-366-8445
www.scccombustion.com

Printed in USA
(05/2018)

Solution
Partner

Combustion
Controls

The Siemens logo, consisting of the word "SIEMENS" in a bold, teal, sans-serif font, centered within a white square with a thin black border.

SIEMENS